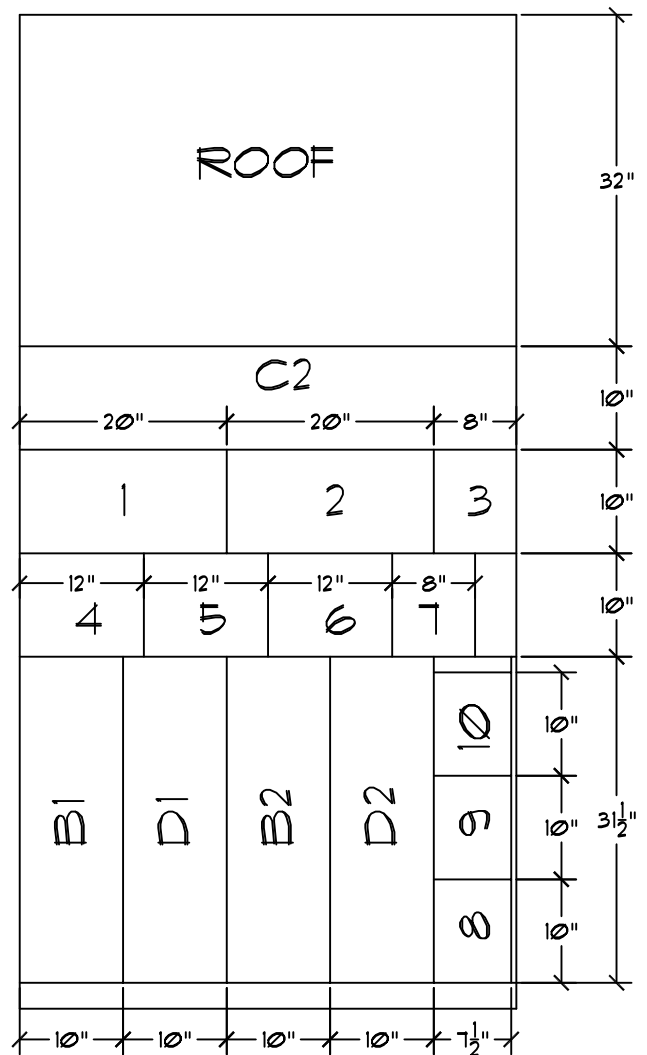
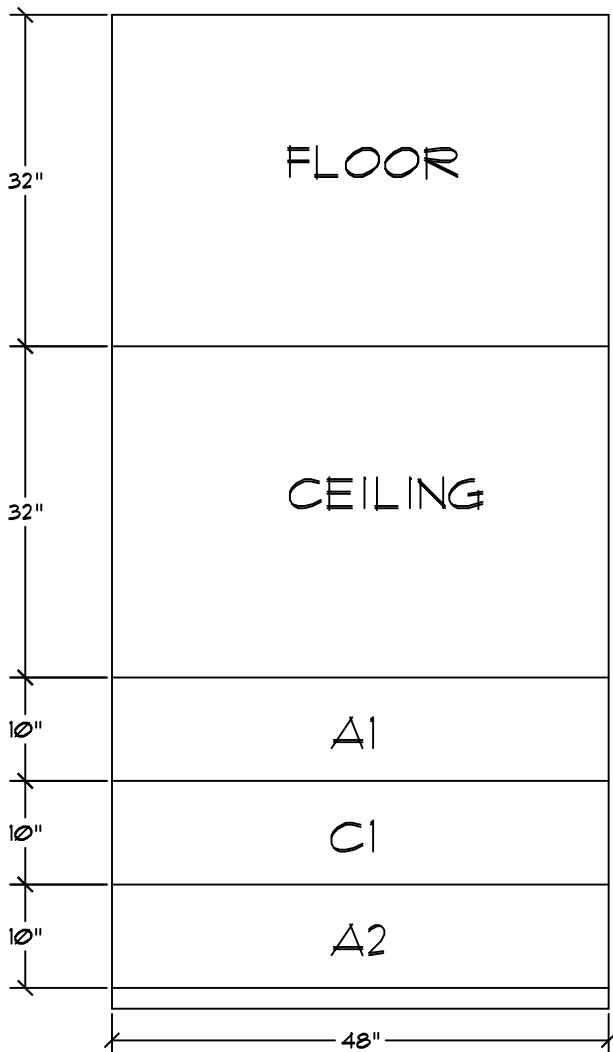
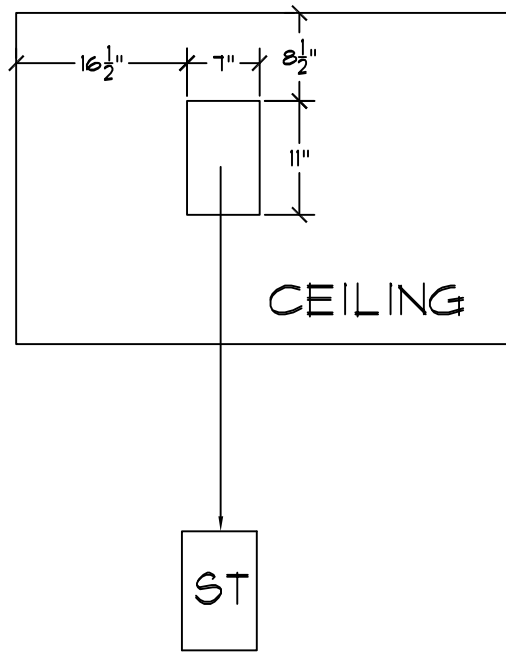
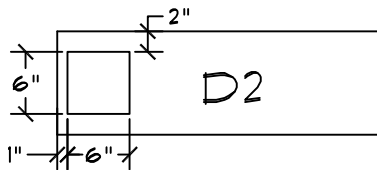
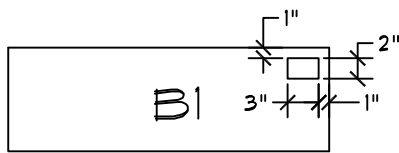
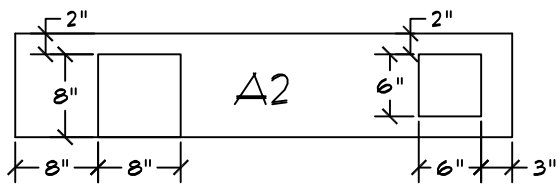
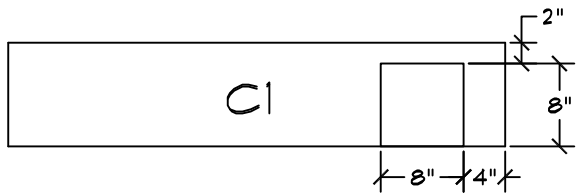
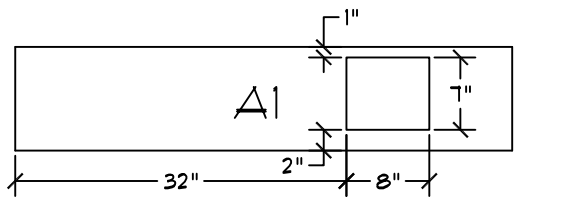


BASEMENT FIRES "DOLL HOUSE"

SUPPLIES REQUIRED:

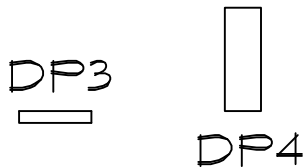
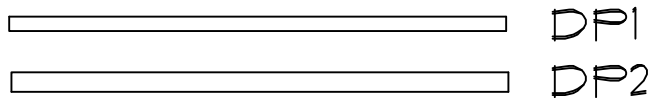
(2) 4' X 8' 7/16" OSB
1-1/4" CROWN STAPLES
SILICONE CAULK FOR
SEALING JOINTS





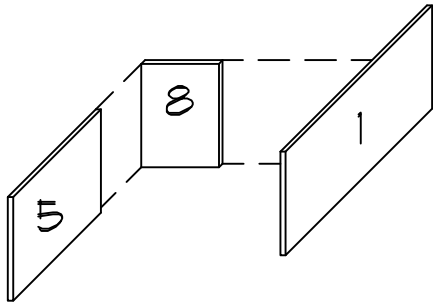
USE CUT-OUT TO FIT INSIDE STAIRWELL TO REPRESENT STAIRS. THE CUT-OUT WILL BE LOSE, SEAL JOINT AS NECESSARY.

SAVE DROP ENDS FOR DOOR SLIDES

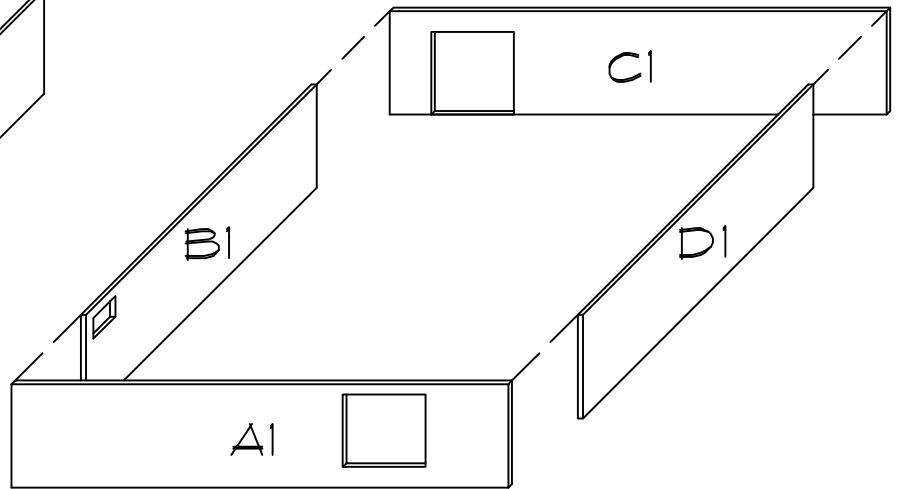


BASEMENT ASSEMBLY

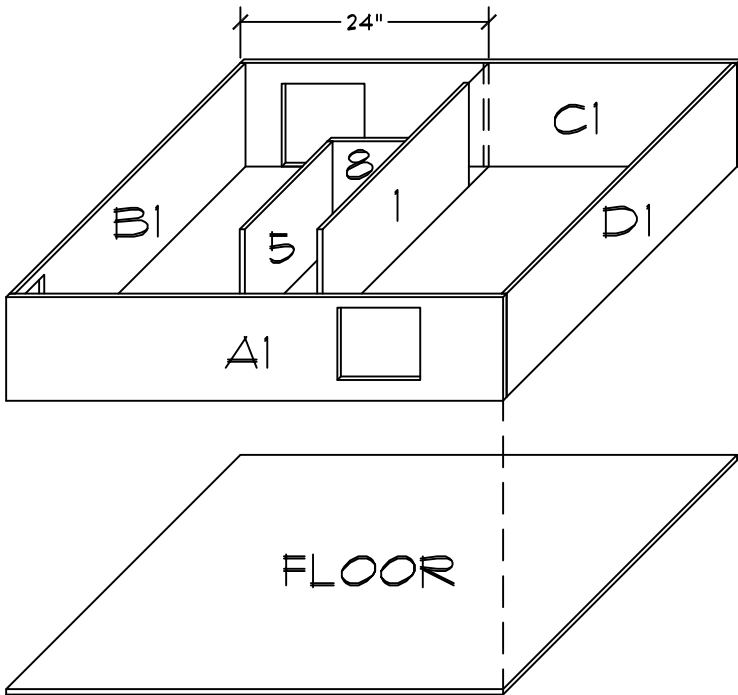
STEP 1:



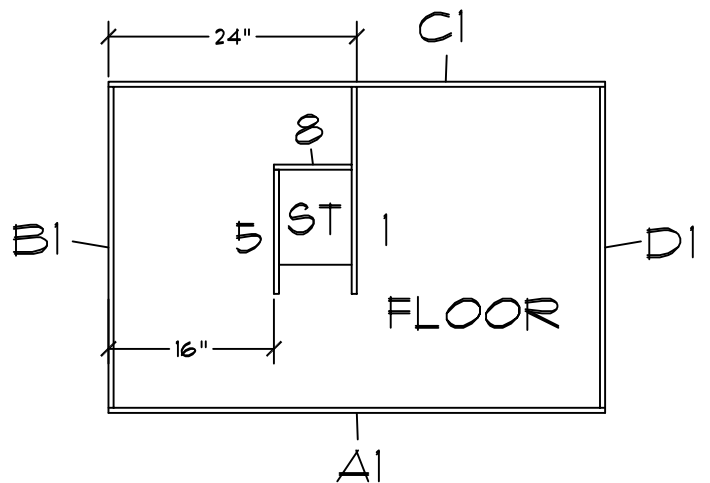
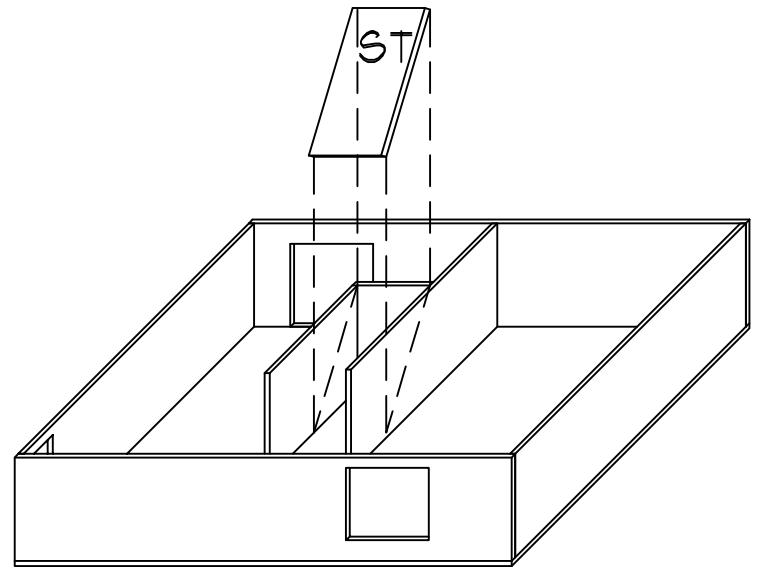
STEP 2:



STEP 3:

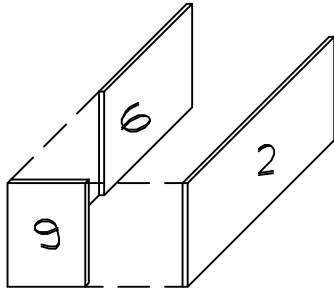


STEP 4:

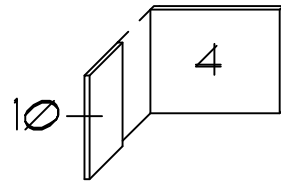


FIRST FLOOR ASSEMBLY

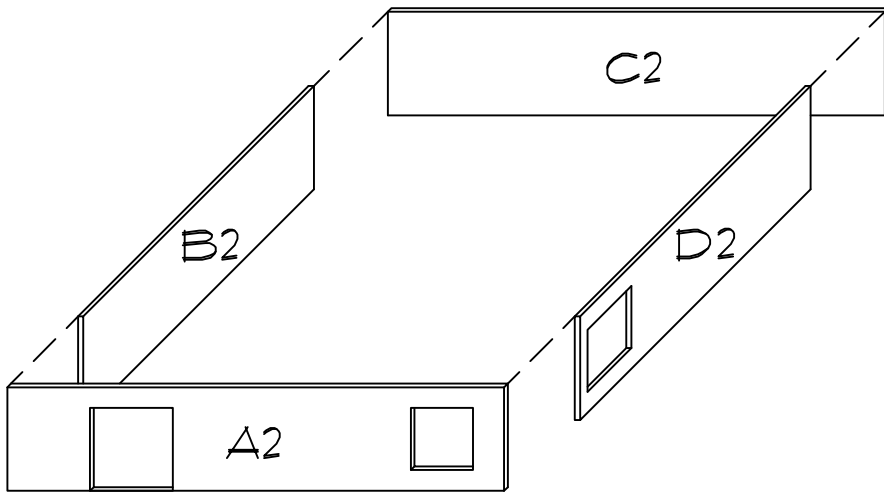
STEP 1:



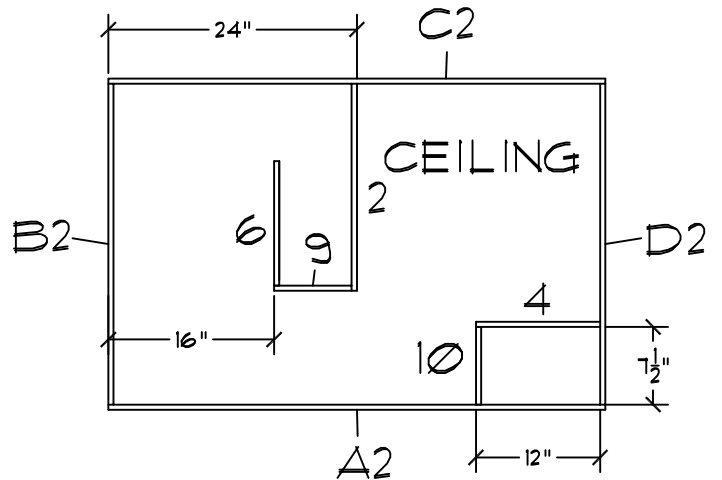
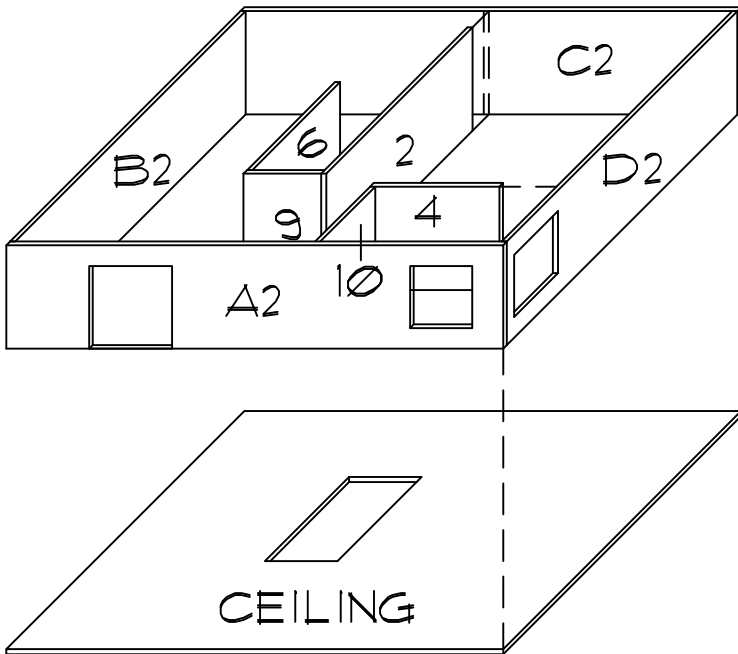
STEP 2:



STEP 3:

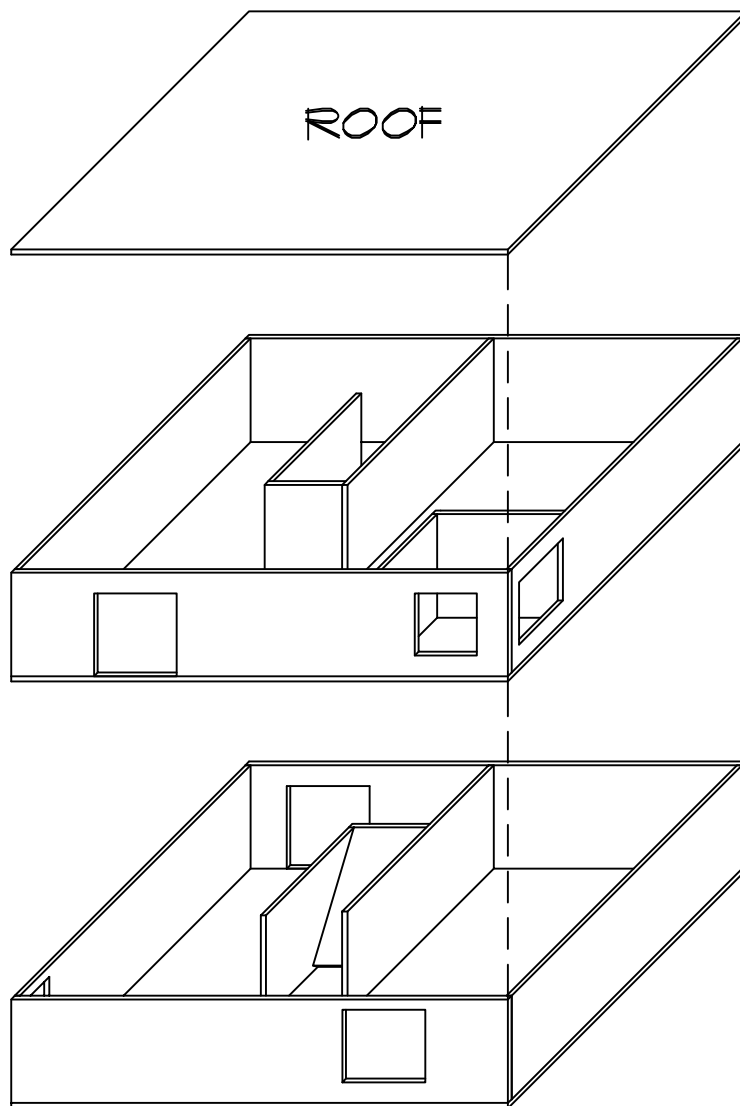


STEP 4:



BUILDING ASSEMBLY

SET FIRST FLOOR ON BASEMENT
LEAVE UNFASTENED FOR
REMOVAL AFTER BURN.
LIGHTLY FASTEN ROOF TO
FIRST FLOOR.

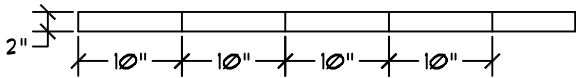


DOORS AND WINDOWS

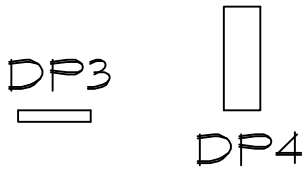
USE DROP ENDS TO BUILD SLIDERS



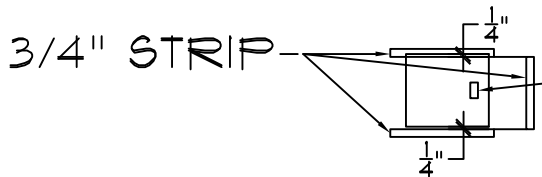
DP1--RIP TO 3/4" WIDTH,
CUT INTO 10" LENGTHS



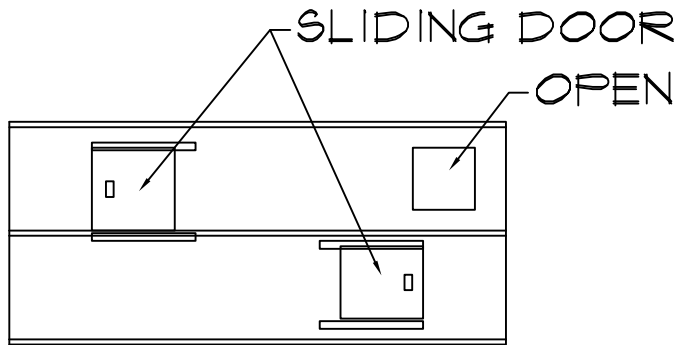
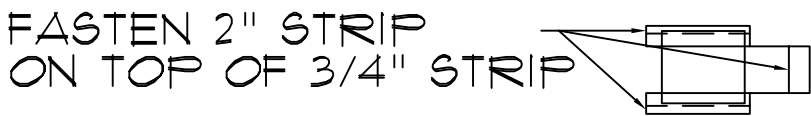
DP2--CUT INTO 10" LENGTHS



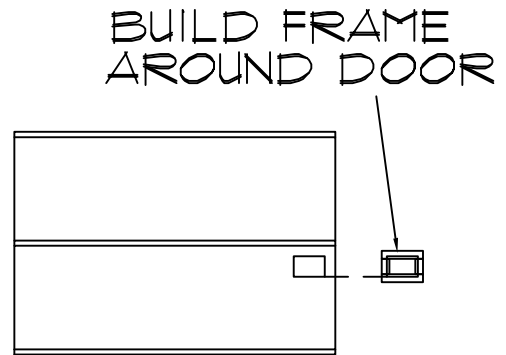
USE DP3 AND DP4 AS
NECESSARY



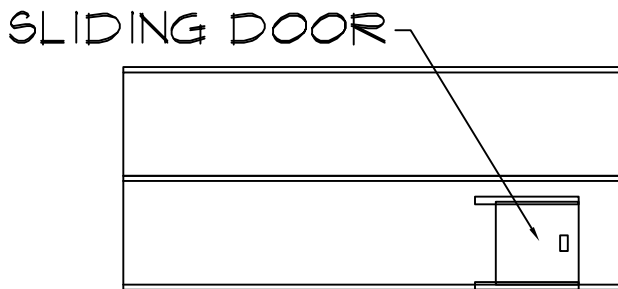
USE SCRAP AS
DOOR PULL



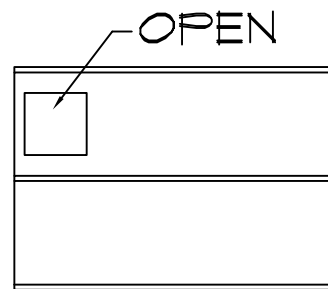
A SIDE



B SIDE



C SIDE



D SIDE





2018

11

MAY

SHIFT 1

TYPE

SHIFT 1

MAY

SHIFT 1



WALPO
MAY 11 2018
SHIFT 1
MS

2018

11

MAY

SHIFT 1

MS

↑
DIRECTION



LP
LP CANADA
MANITOWISH
AAA
RATED SHEATHING
1/2" x 4"
SHEATHING
EXPOSURE 1
1988

LP
LP CANADA LTD.
MANITOWISH
OSB
1/2" x 4"
SHEATHING
EXPOSURE 1
1988





